

PROFESSIONAL "LOW PYRAMID" HOOD 188

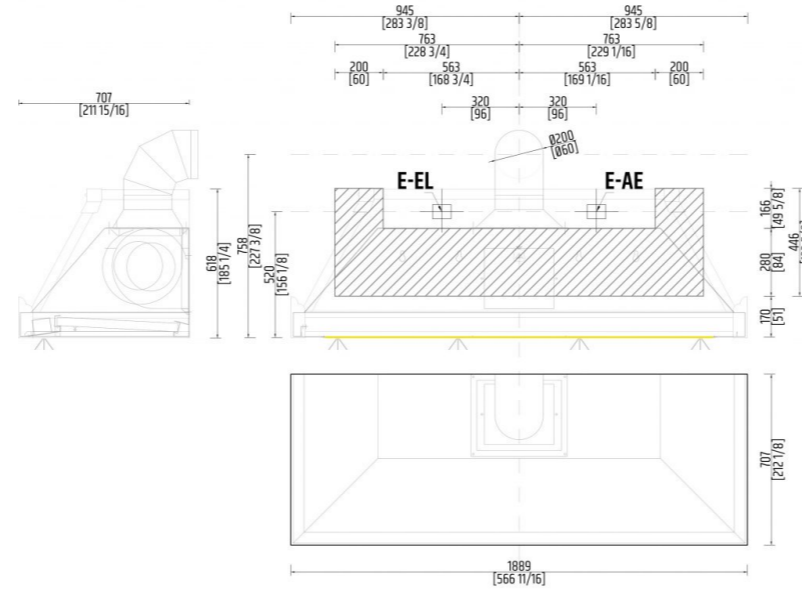
Professional "Low Pyramid" hood in metal. Supplied with internal led lights.

FEATURES

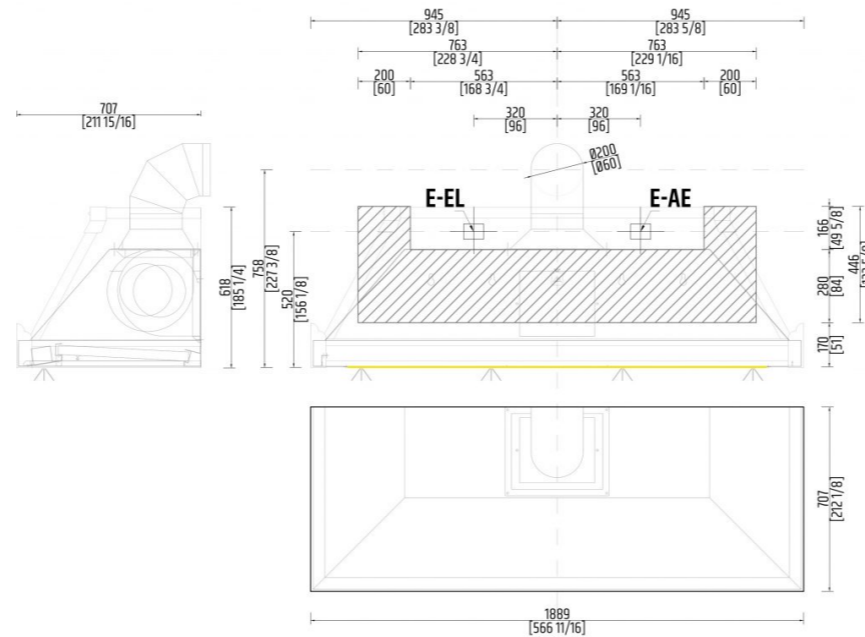
Double inlet direct coupling engines and impeller with forward curved blades. The ability to adjust the speed using a specially designed speed variator. hoods are equipped with inertial labyrinth antigrease filters in stainless steel. The inertial filter takes advantage of the compressions and expansions of the air forced to pass through the slots of the filtering structure. The following benefits are therefore achieved: high degree of separation of fat (up to 70%), high capacity air distribution on the surface of the hood, effective flame retardant barrier.

TECHNICAL DRAWINGS

WALL DUCTING



CEILING DUCTING



TECHNICAL INFO

PROFESSIONAL AIR EXHAUSTER

| | |
|-----------------------|---|
| WIDTH | 566 11/16" in |
| DEPTH | 212 1/8" in |
| HEIGHT | 185 1/4" in |
| FLOWRATE | 1295 CFM |
| MAXIMUM AMP USAGE | 7.7/4.3 A |
| ELECTRICAL SUPPLY (V) | 115/240 V |
| FREQUENCY (HZ) | 60 Hz |
| PLUG TYPE | Wired without plug. Dedicated circuit required. |
| WEIGHT | 105 kg |

LED LIGHTS (2700 K/warm white)

| | |
|--|--|
| ELECTRICAL SUPPLY | 110/240 V |
| FREQUENCY | 60 Hz |
| MAXIMUM AMP USAGE (A) | 1.67 A |
| PLUG TYPE | Wired with plug (Nema 1/15) dedicated circuit required |
| Led lights with dimmerable switch incorporated into the base of the hood | |

NOTES

Check with a qualified HVAC contractor and mechanical engineer and or local codes for makeup air requirement. This is important to ensure maximum performance from any ventilation product. All CFMs are based on tests at 0.1 static pressure: without applying static pressure, CFM would be greatly overstated. Straight runs and gradual turns are best; for example, each 90° elbow is equivalent to 5-10 feet (1.52-3.05 cm) of straight run. Never use flexible duct; it creates back pressure/air turbulence and greatly reduces performance. Proper performance is dependent on proper ducting; make sure that a qualified and trained HVAC contractor is used.