



### PROFESSIONAL "LOW PYRAMID" HOOD 188

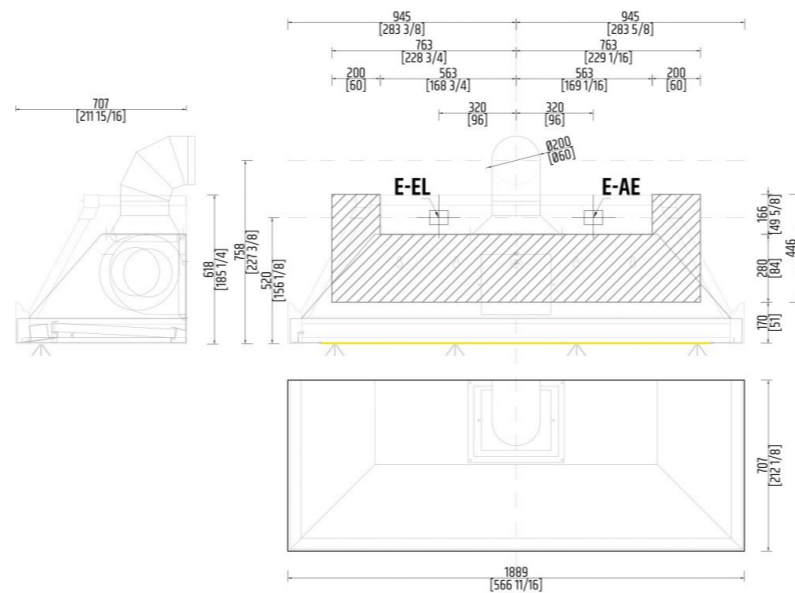
Professional "Low Pyramid" hood in metal. Supplied with internal led lights.

#### FEATURES

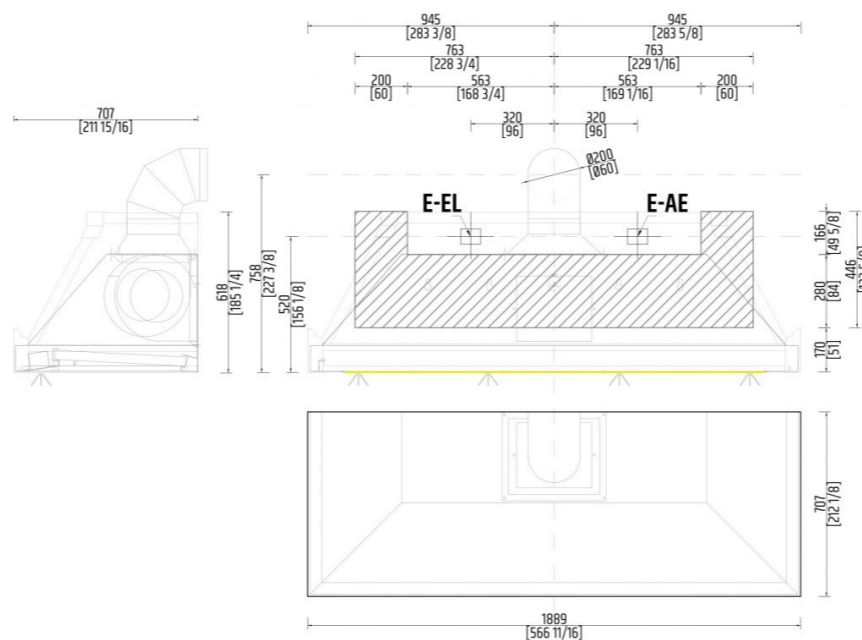
Double inlet direct coupling engines and impeller with forward curved blades. The ability to adjust the speed using a specially designed speed variator. hoods are equipped with inertial labyrinth antigrease filters in stainless steel. The inertial filter takes advantage of the compressions and expansions of the air forced to pass through the slots of the filtering structure. The following benefits are therefore achieved: high degree of separation of fat (up to 70%), high capacity air distribution on the surface of the hood, effective flame retardant barrier.

#### TECHNICAL DRAWINGS

##### WALL DUCTING



##### CEILING DUCTING



#### TECHNICAL INFO

##### PROFESSIONAL AIR EXHAUSTER

WIDTH	566 11/16" in
DEPTH	212 1/8" in
HEIGHT	185 1/4" in
FLOWRATE	1295 CFM
MAXIMUM AMP USAGE	7.7/4.3 A
ELECTRICAL SUPPLY (V)	115/240 V
FREQUENCY (HZ)	60 Hz
PLUG TYPE	Wired without plug. Dedicated circuit required.
WEIGHT	105 kg

##### LED LIGHTS (2700 K/warm white)

ELECTRICAL SUPPLY	110/240 V
FREQUENCY	60 Hz
MAXIMUM AMP USAGE (A)	1.67 A
PLUG TYPE	Wired with plug (Nema 1/15) dedicated circuit required
Led lights with dimmerable switch incorporated into the base of the hood	

#### NOTES

Check with a qualified HVAC contractor and mechanical engineer and or local codes for makeup air requirement. This is important to ensure maximum performance from any ventilation product. All CFMs are based on tests at 0.1 static pressure: without applying static pressure, CFM would be greatly overstated. Straight runs and gradual turns are best; for example, each 90° elbow is equivalent to 5-10 feet (1.52-3.05 cm) of straight run. Never use flexible duct; it creates back pressure/air turbulence and greatly reduces performance. Proper performance is dependent on proper ducting; make sure that a qualified and trained HVAC contractor is used.