



PROFESSIONAL "LOW PYRAMID" HOOD 148

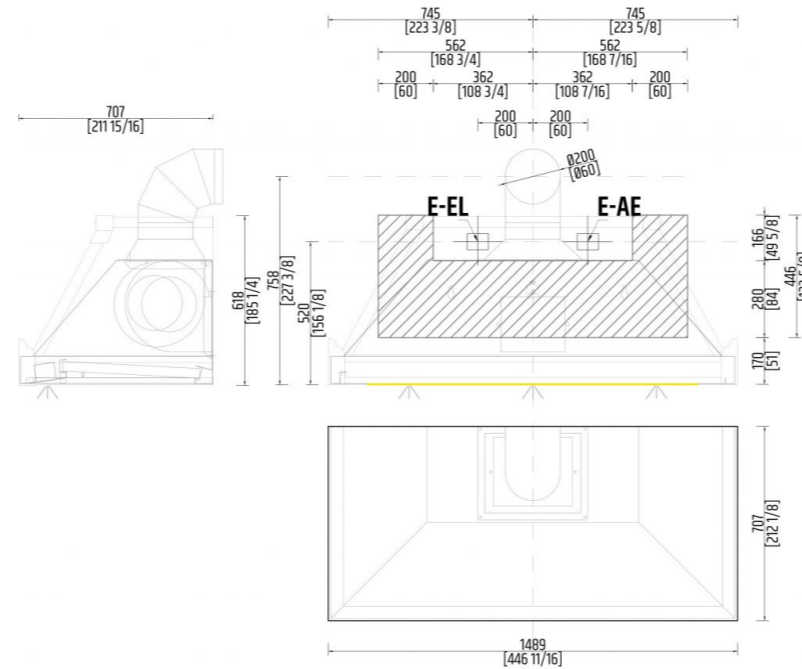
Professional "Low Pyramid" hood in metal. Supplied with internal led lights.

FEATURES

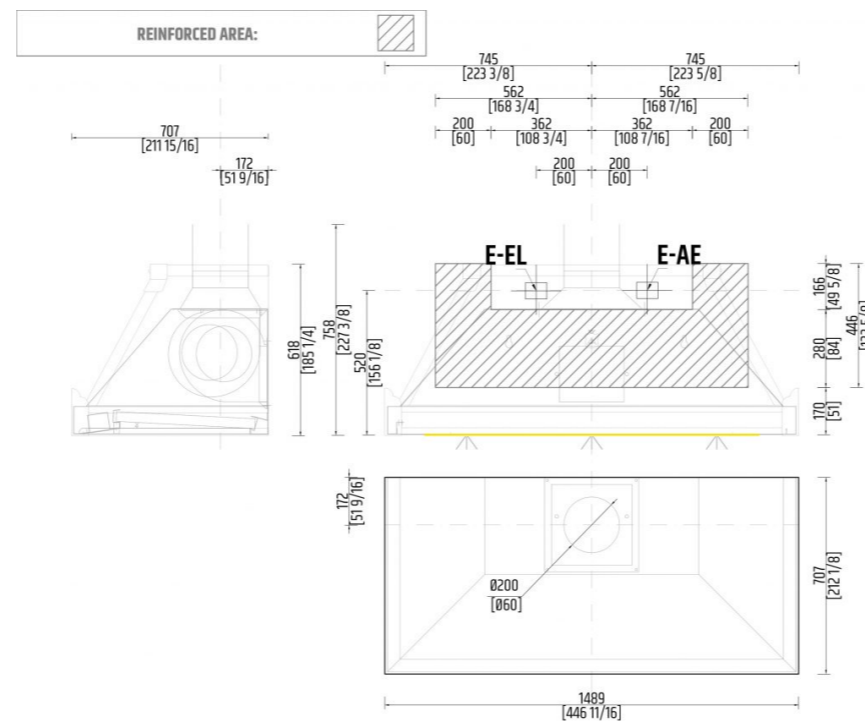
Double inlet direct coupling engines and impeller with forward curved blades. The ability to adjust the speed using a specially designed speed variator. hoods are equipped with inertial labyrinth antigrease filters in stainless steel. The inertial filter takes advantage of the compressions and expansions of the air forced to pass through the slots of the filtering structure. The following benefits are therefore achieved: high degree of separation of fat (up to 70%), high capacity air distribution on the surface of the hood, effective flame retardant barrier.

TECHNICAL DRAWINGS

WALL SMOKE EXIT



CEILING SMOKE EXIT



TECHNICAL INFO

PROFESSIONAL AIR EXHAUSTER

WIDTH	446 11/16" in
DEPTH	212 1/8" in
HEIGHT	185 1/4" in
FLOWRATE	1118 CFM
MAXIMUM AMP USAGE	7.7/4.3 A
ELECTRICAL SUPPLY (V)	115/240 V
FREQUENCY (HZ)	60 Hz
PLUG TYPE	Wired without plug. Dedicated circuit required.
WEIGHT	75 kg

LED LIGHTS (2700 K/warm white)

ELECTRICAL SUPPLY	110/240 V
FREQUENCY	60 Hz
MAXIMUM AMP USAGE (A)	1.67 A
PLUG TYPE	Wired with plug (Nema 1/15) dedicated circuit required
Led lights with dimmerable switch incorporated into the base of the hood	

NOTES

Check with a qualified HVAC contractor and mechanical engineer and or local codes for makeup air requirement. This is important to ensure maximum performance from any ventilation product. All CFMs are based on tests at 0.1 static pressure: without applying static pressure, CFM would be greatly overstated. Straight runs and gradual turns are best; for example, each 90° elbow is equivalent to 5-10 feet (1.52-3.05 cm) of straight run. Never use flexible duct; it creates back pressure/air turbulence and greatly reduces performance. Proper performance is dependent on proper ducting; make sure that a qualified and trained HVAC contractor is used.